

THE SAN FRANCISCO VENUE
DESIGNED FOR
IMMERSIVE EXPERIENCES

969 MARKET VENUE @The Village

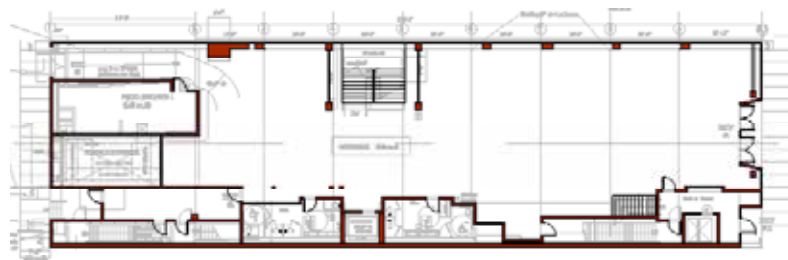
Features 17,000 sqft over three distinct floors conveniently located in the heart of San Francisco. The venue was designed with event planners needs in mind: separate levels for creating different environments, multiple entrances on each of the floors, and easy access for load-in. Enjoy the convenience of our in-house Catering, Bar Services and A/V by MADRONE STUDIOS. We invite you to discover what makes our venue so unique!

969 MARKET VENUE
@
THE VILLAGE

www.969market.com
415-757-0720
go@969market.com

969 Market St. San Francisco, CA 94103





- Onsite Catering
- Licensed Bar Service
- 400-amps / 3 phase electric
- Meyers Sound System
- 75' x 10' Seamless Screen



Ground Floor

Enjoy easy load-in access and an industrial feel with cement floors, an open staircase, and multiple exits and entrances.

- Banquet: 230
- Theater: 410
- Classroom: 250
- Reception: 500
- Rental: \$16,000**
- Load-in/out: \$10,000**

Lower Floor

Wine, dine, and entertain your guests in the "underground" level with our Built in Bar and custom projection and lighting packages... Enter from a private entrance or from the open staircase leading from the ground floor or take the elevator.

- Banquet: 110
- Theater: 130
- Classroom: 90
- Reception: 226

***First Floor Rental available with Ground Floor.**



- Conference Room
- Prep Kitchen Area
- Natural Light | Skylight
- 300-amps / 3 phase electric
- Solar Power

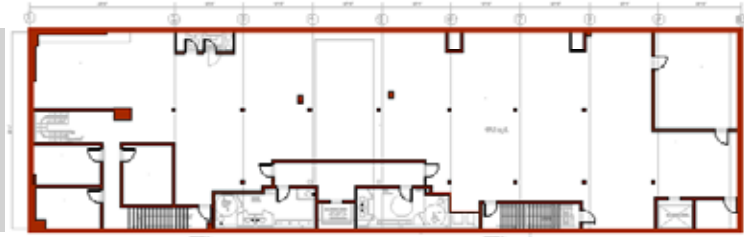
Upper Floor

The upper floor features exposed brick, brand new hardwood floors, and plenty of natural light. Wall of windows overlooking Market street.

- Banquet: 300
- Theater: 300
- Classroom: 200
- Reception: 450
- Rental: \$10,000**
- Load-in/out: \$6,000**



- Built-in Bar
- In-house A/V
- Car Turntable
- Entertainment Permit
- Building Wide Internet



Buyout All (3) Floors: \$20,000 Loadin/Out: \$12,000